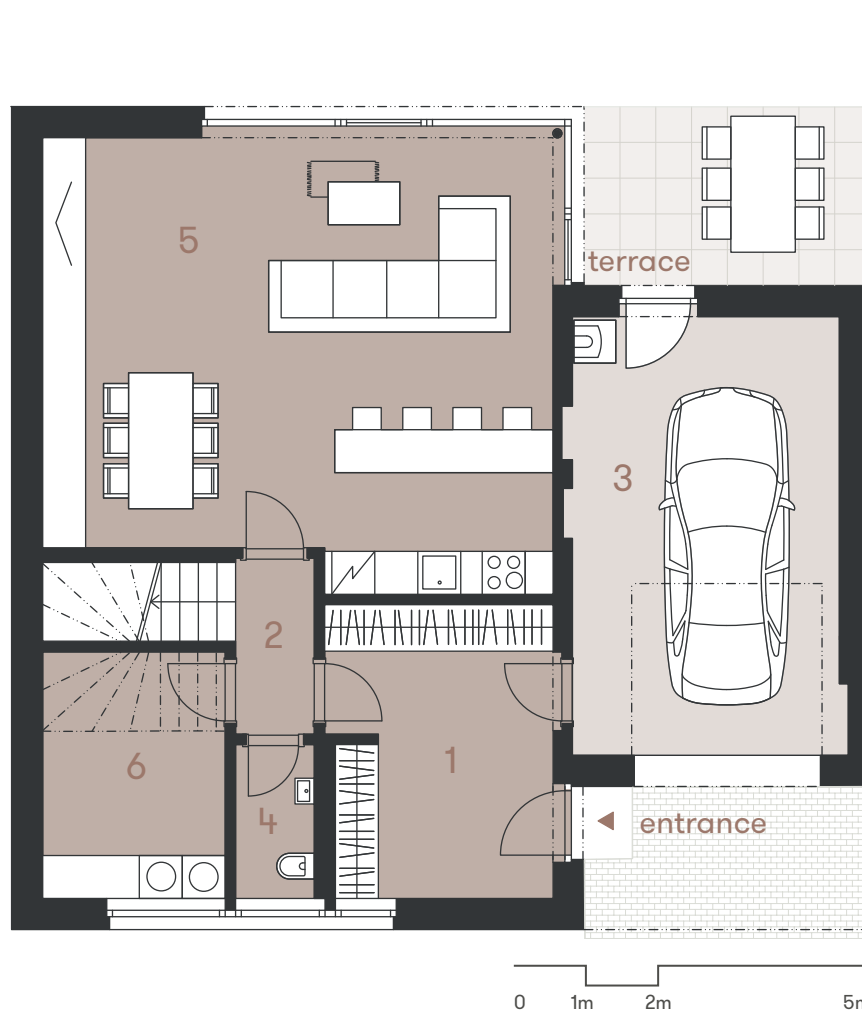


# NA PRAMENECH

D139 | 4-bedroom | 170.50 sq.m.

Phase IV.



no.	room	sq.m.
1	foyer	12.98
2	hallway	2.71
3	garage	24.10
4	toilet	2.37
5	living room with a kitchen	44.09
6	tech. room	8.79
useable area of the 1 <sup>st</sup> floor		95.04
terrace		11.25
total useable area of the house		165.08
total floor area of the house		170.50

[www.domynapramenech.cz](http://www.domynapramenech.cz)

Developer  
bpd development

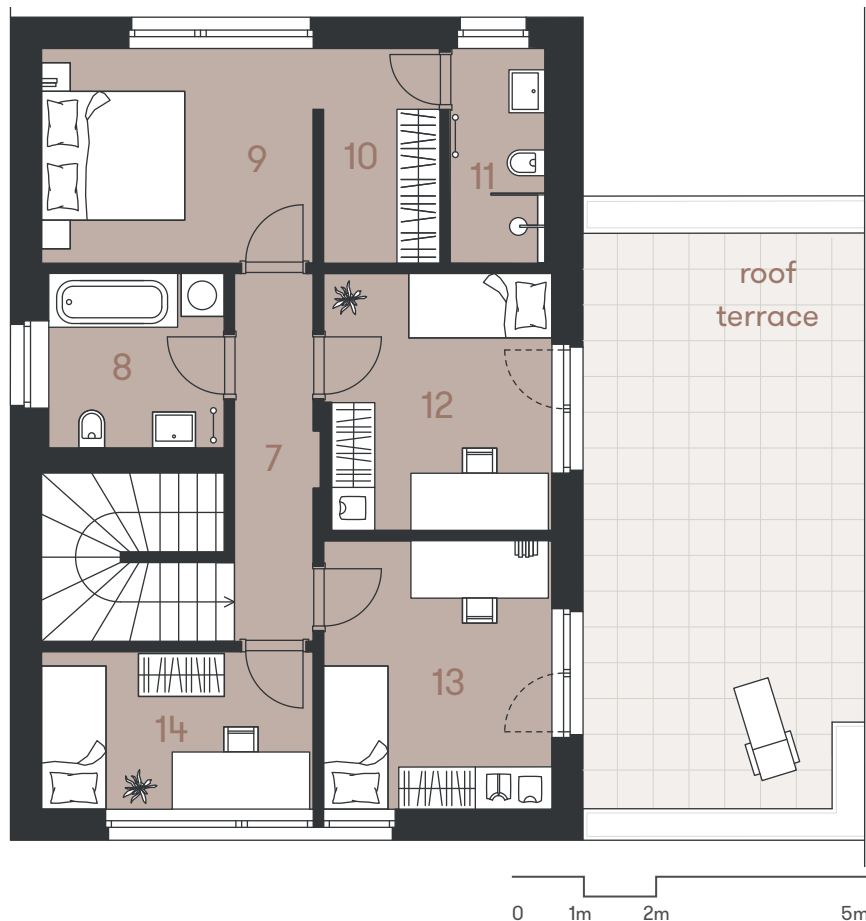
Exclusive agent

svoboda&williams | CHRISTIE'S  
INTERNATIONAL REAL ESTATE

Na Perštýně 2, 110 00 Praha 1  
+420 257 328 281, +420 257 322 032  
[info@svoboda-williams.com](mailto:info@svoboda-williams.com)

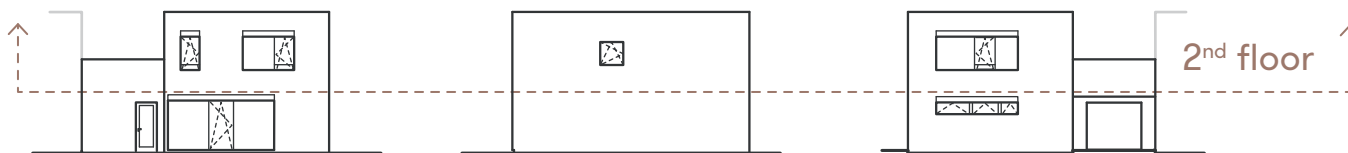
The diagram of the house's floor plan shows its interior layout. The kitchen and furniture are not included, but are shown purely for illustrative purposes. The description of the structure, surfaces, and range of equipment is part of the "Property Standards" appendix. The developer reserves the right to change and/or specify without prior notice.





no.	room	sq.m.
7	hallway and stairs	11.91
8	bathroom	5.97
9	bedroom	11.51
10	dressing room	4.88
11	bathroom	3.96
12	bedroom	11.25
13	bedroom	11.96
14	bedroom	8.35
useable area of the 2 <sup>nd</sup> floor		70.04
roof terrace		31.72
total useable area of the house		165.08
total floor area of the house		170.50

[www.domynapramenech.cz](http://www.domynapramenech.cz)



Developer  
bpd development

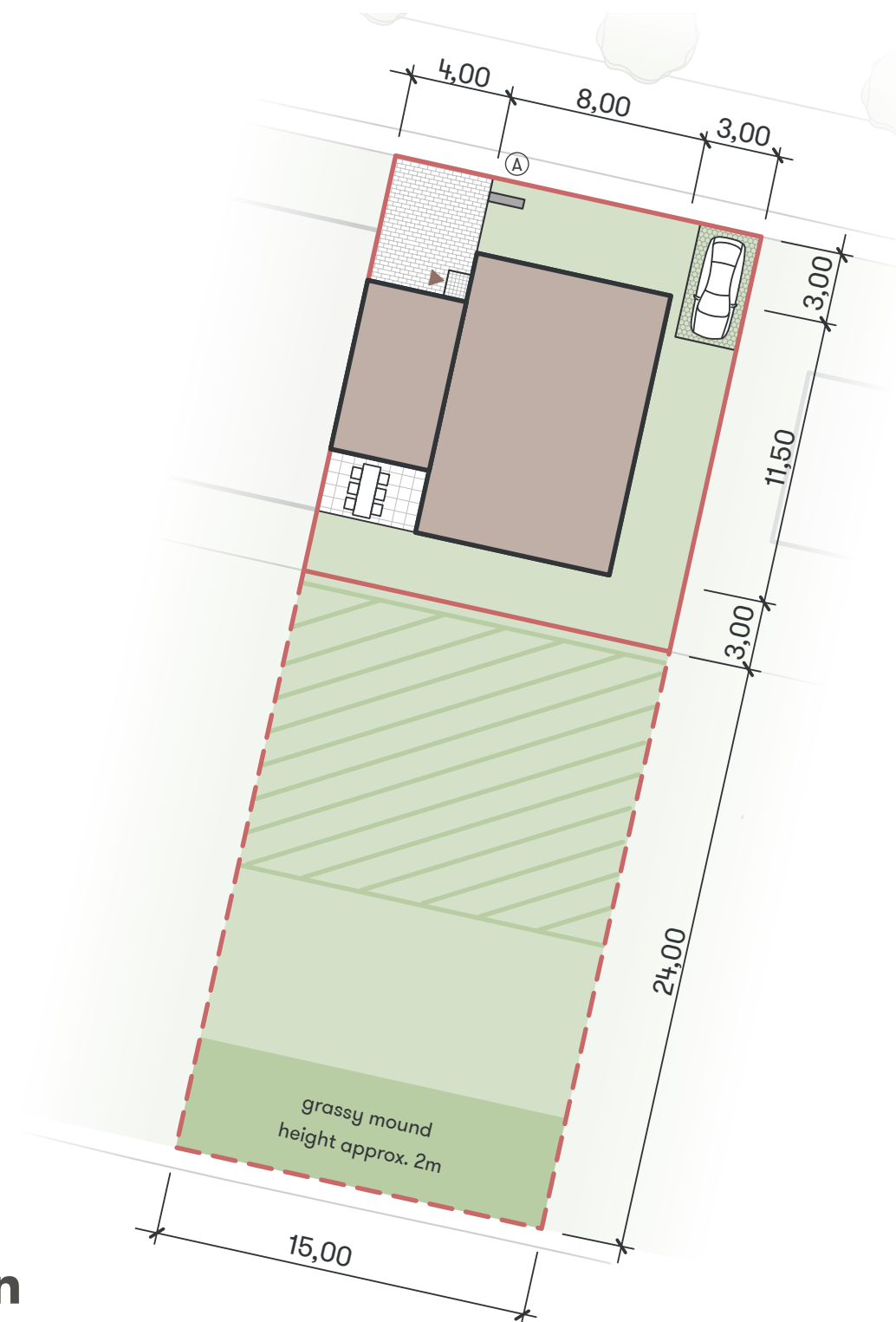
Exclusive agent  
svoboda&williams | CHRISTIE'S  
INTERNATIONAL REAL ESTATE

Na Perštýně 2, 110 00 Praha 1  
+420 257 328 281, +420 257 322 032  
info@svoboda-williams.com

The diagram of the house's floor plan shows its interior layout. The kitchen and furniture are not included, but are shown purely for illustrative purposes. The description of the structure, surfaces, and range of equipment is part of the "Property Standards" appendix. The developer reserves the right to change and/or specify without prior notice.

D139 | 4-bedroom | 170.50 sq.m.

Phase IV.



area	sq.m.
built-up area of the house	120.00
garden	142.00
separate land	357.00
total area of the land	619.00

- Ⓐ pillar for both electricity and gas meter
- plot border
- - - land encumbered by easement - sold separately
- easement - heat pipe

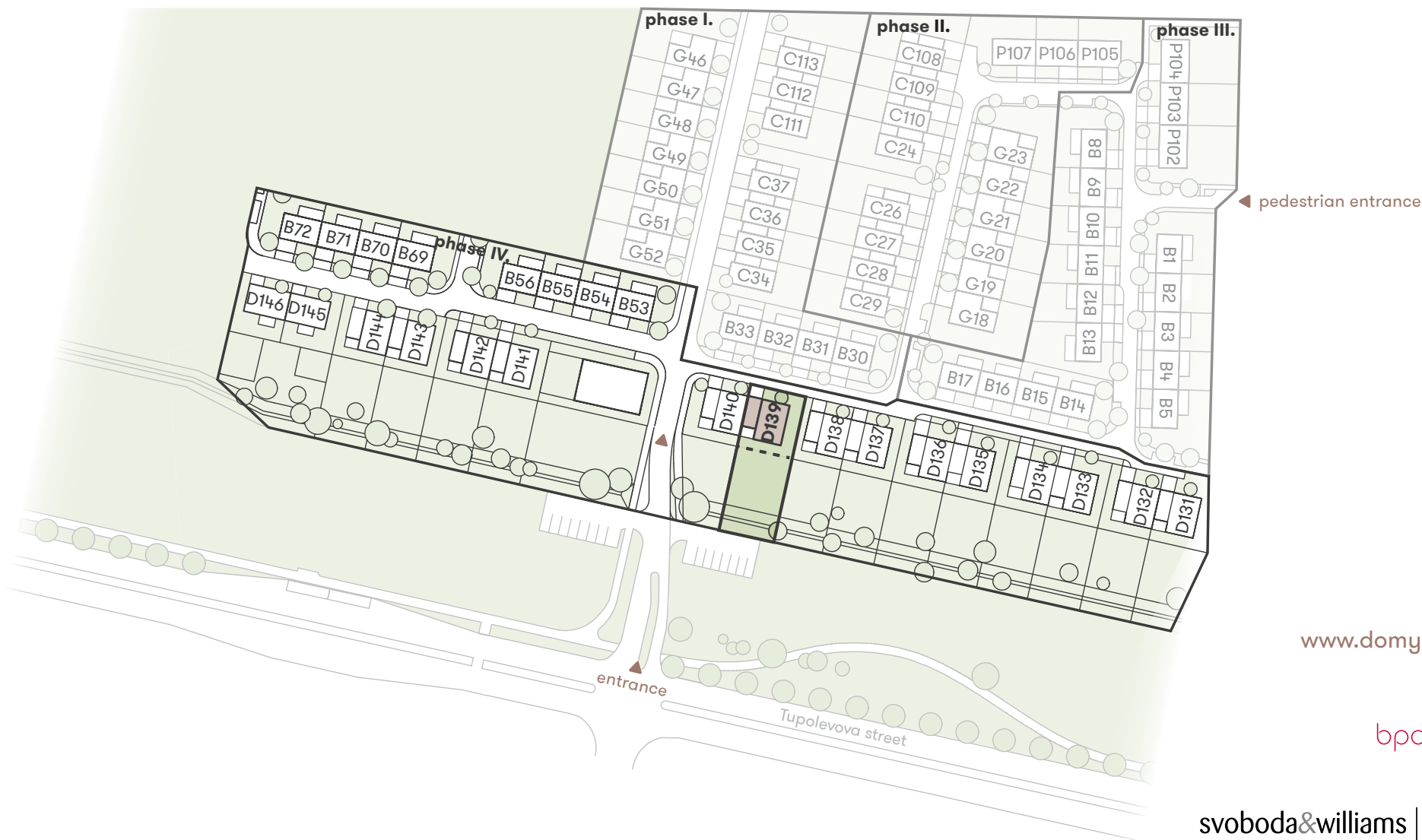
[www.domynapramenech.cz](http://www.domynapramenech.cz)

Developer  
bpd development

Exclusive agent  
svoboda&williams | CHRISTIE'S  
INTERNATIONAL REAL ESTATE

Na Perštýně 2, 110 00 Praha 1  
+420 257 328 281, +420 257 322 032  
info@svoboda-williams.com

Situation



[www.domynapramenech.cz](http://www.domynapramenech.cz)

Developer  
bpd development

Exclusive agent  
svoboda&williams | CHRISTIE'S  
INTERNATIONAL REAL ESTATE

Na Perštýně 2, 110 00 Praha 1  
+420 257 328 281, +420 257 322 032  
info@svoboda-williams.com

## Overall Situation